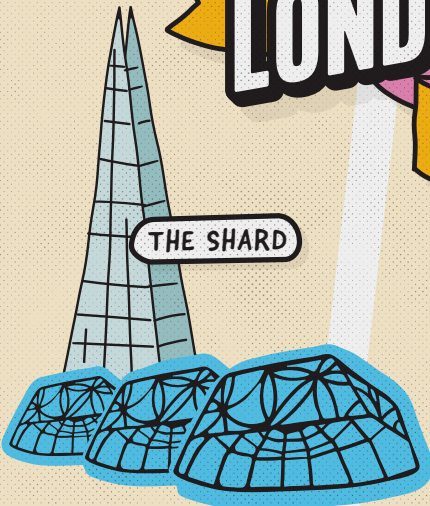


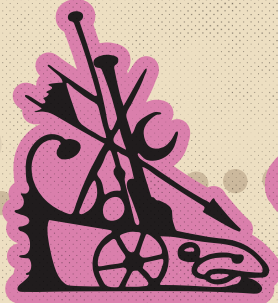
LONDON BRIDGE

EXPLORERS MAP



THE SHARD

HAY'S GALLERIA



QUEEN'S WALK

LONDON BRIDGE



LONDON BRIDGE



TOOLEY STREET



TRAIL

- FULL STOPS
- EVERGREEN TREE
- HMS BELFAST
- THE NAVIGATORS
- ME. HERE. NOW.
- THE COUPLE

RIVER THAMES

THE SCOOP

UNICORN THEATRE

QUEEN'S WALK

ST. JOHN'S CHURCHYARD PLAYGROUND

POTTERS FIELDS PARK

TOWER BRIDGE

TOOLEY STREET

TOWER BRIDGE ROAD



YOUR LONDON BRIDGE
ADVENTURE AWAITS...

LONDON BRIDGE

EXPLORERS MAP

Follow the trail to discover a giant mythical whale, a massive warship and some hidden people.

WHAT ELSE CAN YOU FIND?



FULL STOPS

by Fiona Banner (2004)

There are five different Full Stops around the public plaza on the riverfront. Can you find them all? All cast in bronze and coated in shiny black paint – the same as used on London taxis – it reflects the surrounding buildings, light and water.

What shapes are the full stops?

Sculpture project initiated by More London Estates (now London Bridge City), with support from the Pool of London Partnership and Arts & Business new Partners.



EVERGREEN TREE

by David Batchelor (2003)

Overlooking HMS Belfast is David Batchelor's bright green illuminated sculpture of a tree. Sited within a cluster of real trees tucked between the large office buildings, it shines out like a playful beacon inviting us to look closer at nature.

What is your favourite tree?

Commissioned by London Bridge City.



HMS BELFAST

Located on the River Thames between London Bridge and Tower Bridge is HMS Belfast, the Second World War Royal Navy warship known as Tiddly B. Since her launch over 80 years ago, she fired some of the first shots at the D-Day landings, served in the Arctic Convoys, and in the Korean War.

Did you know you can climb aboard?



THE NAVIGATORS

by David Kemp (1986)

Inspired by Hay's Galleria (the historic wharf where it sits), stories of maritime commerce, Victorian adventures and sea-voyages, the artist has combined fantasy sea monsters, man and machine in this large 60 foot sculpture.

Walk around and look at it from every side. Can you take a photo of the face?

Commissioned by London Bridge City, in collaboration with the Hay's Galleria architect, Bob Clements.



ME. HERE. NOW.

by Mark Titchner (2018)

On Stainer Street at London Bridge Station, opposite Hay's Galleria. Look up and see three huge stainless-steel domes suspended from an arched ceiling, printed with geometric designs and three short texts. Can you read them?

'Only the first step is difficult', 'The distance means nothing', 'One foot in front of the other'

Which is your favourite?

Commissioned by Network Rail as part of the re-development and transformation of London Bridge Station. Curated by Futurecity in collaboration with Network Rail.



THE COUPLE

by Stephan Balkenhol (2003)

Sited in front and above The Hilton at 5A More London Place. Look up. Located high above street level, the carved sculptures of a man and a woman are set apart but are clearly a couple.

Can you find them? What are they wearing?

Commissioned by More London Estates (now London Bridge City).

FOR MORE FAMILY FRIENDLY
THINGS TO DO IN THE LONDON
BRIDGE AREA GO TO:

WWW.ATLONDONBRIDGE.COM

TEAM
LONDON
BRIDGE



LONDON BRIDGE CITY