

# London Bridge Business Improvement District

## Crime Review April – June 2010

[PLEASE NOTE THAT GUY'S HOSPITAL IS OUTSIDE THE BID AREA BUT INCLUDED FOR INFORMATION]

<b>Protective Marking:</b>	Restricted
<b>Publication scheme:</b>	No
<b>FOIA Exemption:</b>	No
<b>Title &amp; Version:</b>	Team London Bridge Crime Review Apr-Jun
<b>Purpose:</b>	Crime figure review within a specified geographical area
<b>Relevant to:</b>	Team London Bridge, Riverside SNT
<b>Summary:</b>	Breakdown of all mapped crime within B.I.D. by Initial Classification
<b>Author:</b>	Name C078172 Lindsay Rosser – Intelligence Analyst
<b>Business:</b>	MPS Southwark Safer Neighbourhoods
<b>Date created:</b>	13/07/2010
<b>Ratification date:</b>	.....
<b>Review date:</b>	01/10/2010.....

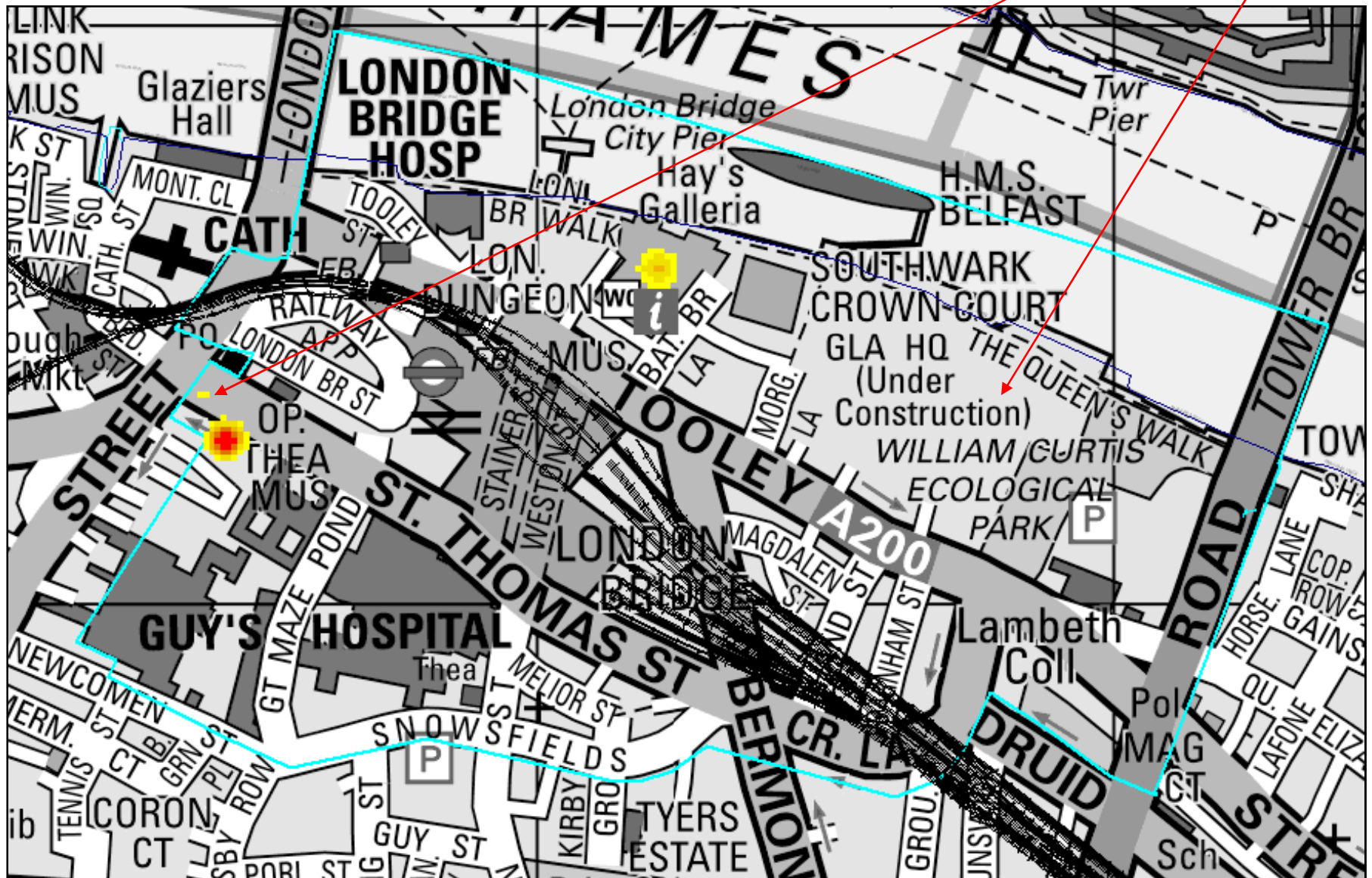
**TeamLondonBridge**  
improving our district



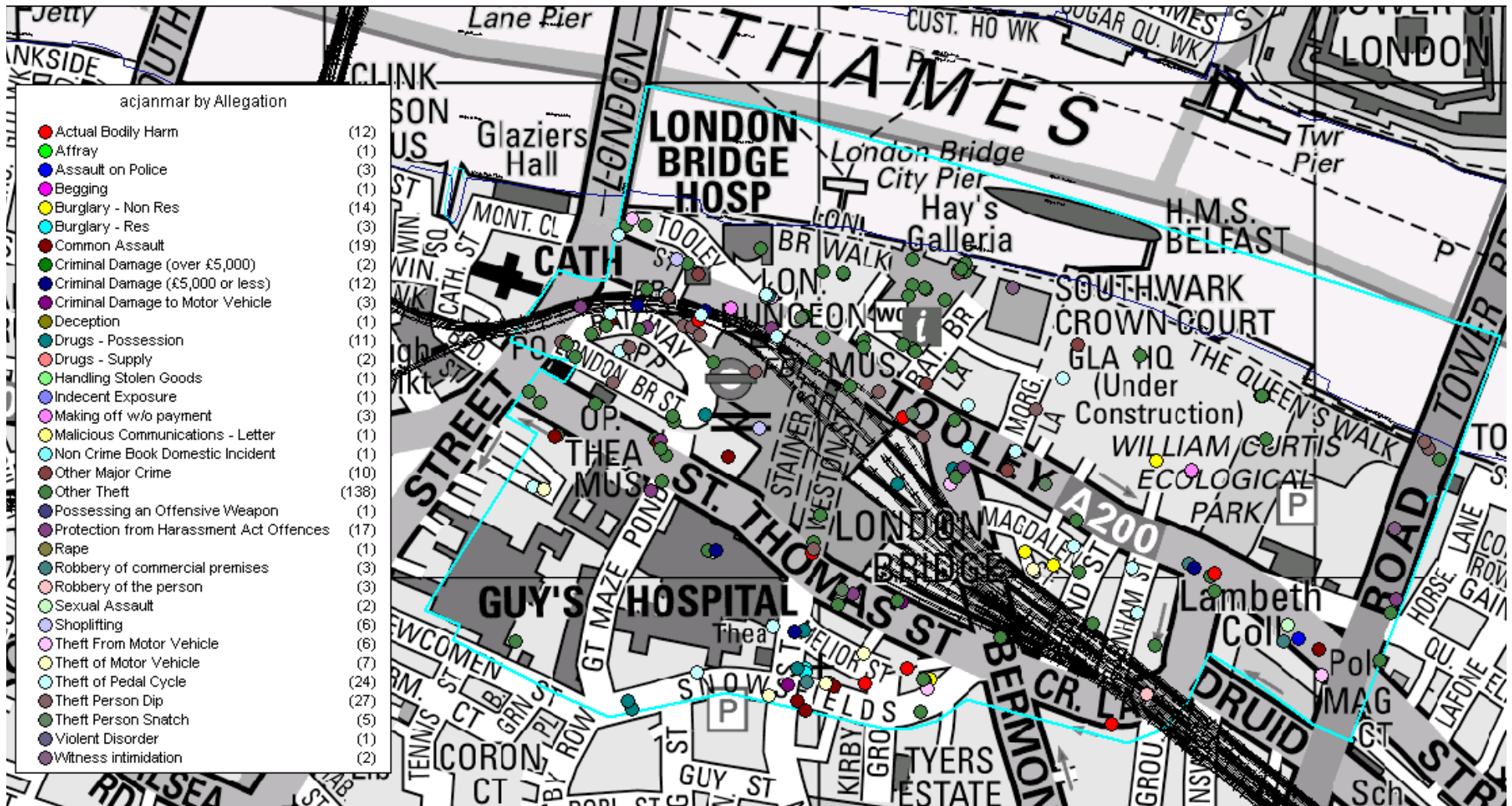
Working together for a safer London

# Findings: hotspot map

- Three month hotspot map: hotspots are Hay's Galleria (46 of which 35 are Hornimans PH) Guys Hospital (27) and smaller ones at The Bunch of Grapes (9) and GLA (5).

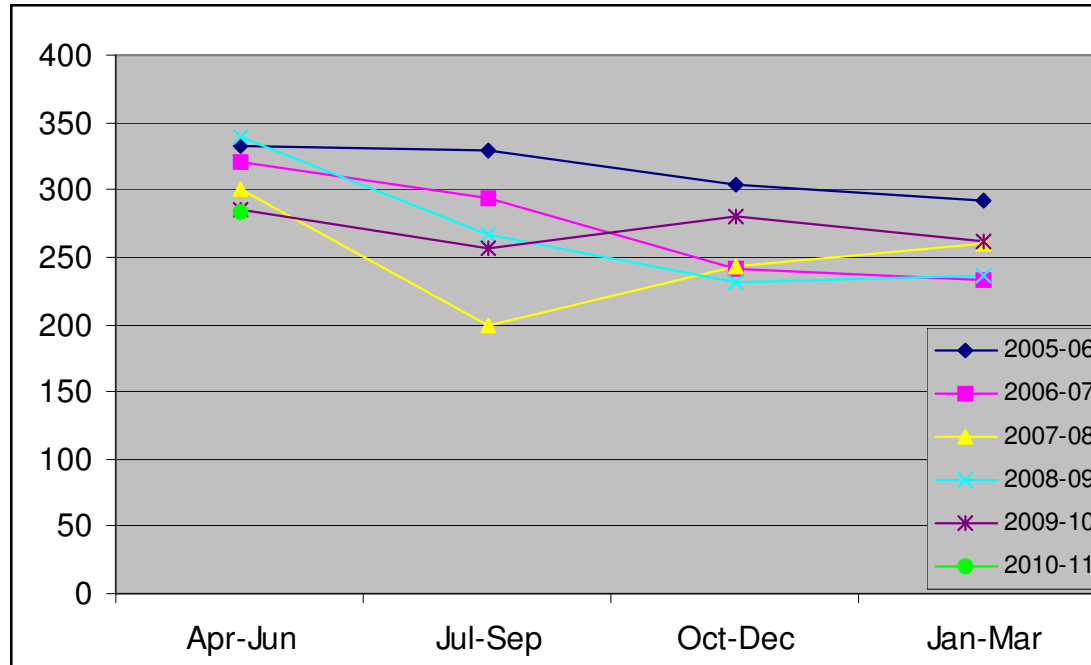


# Findings: incident map April-June



Main areas for Other Theft are Tooley St and surrounds, London Bridge station area and Hays Galleria

# Findings: all crime, quarterly



- This year Q1 similar to last year.

	Apr-Jun	Jul-Sep	Oct-Dec	Jan-Mar	totals
2005-06	333	329	303	292	1257
2006-07	321	293	242	233	1089
2007-08	301	200	243	260	1004
2008-09	339	266	231	237	1073
2009-10	285	257	281	261	1084
2010-11	278				

# Findings: top 10 comparison

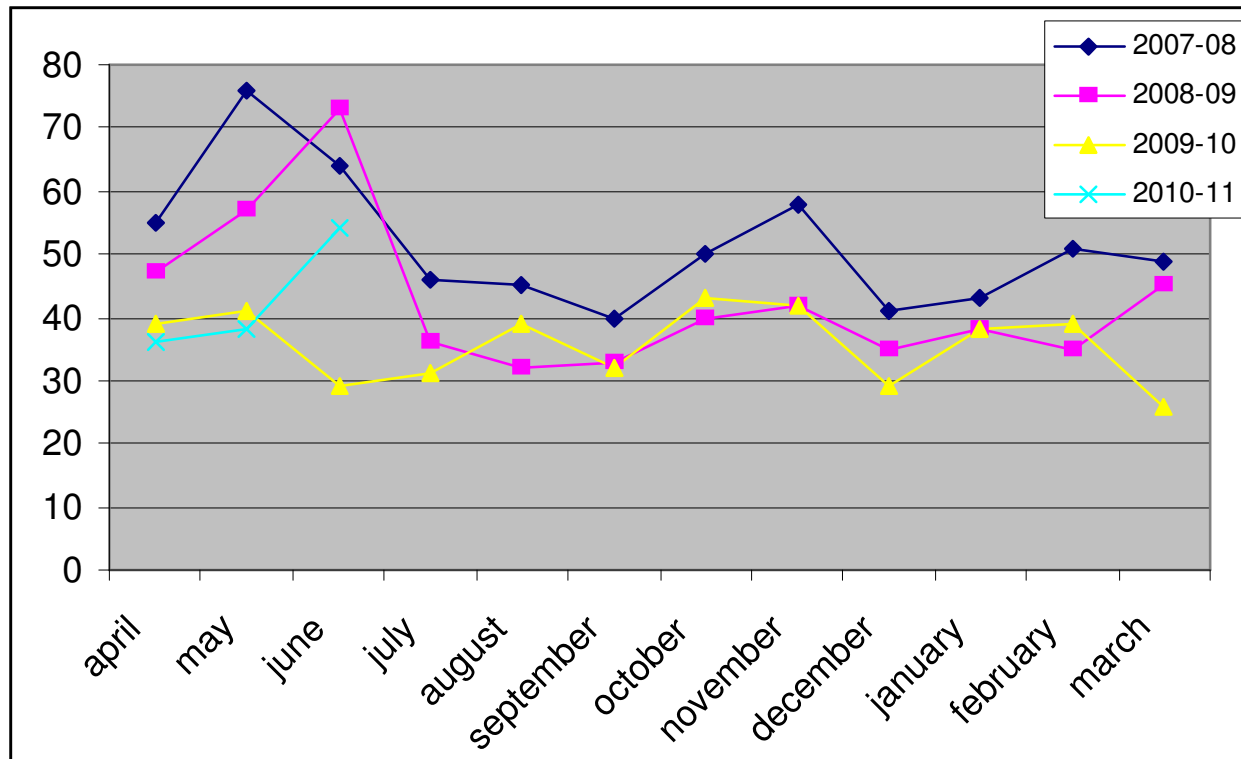
Compared with previous quarter, there has been a **6.92% increase** in all crime, with increases in Theft of Pedal Cycle and MV crime, besides Other Theft.

	Q12010-11	prev Q	% change
Other Theft	128	103	24.27
Theft of Pedal Cycle	26	14	85.71
Theft Person Dip	20	24	-16.67
Common Assault	11	15	-26.67
Protection from Harassment	9	13	-30.77
Theft of Motor Vehicle	9	3	200.00
Theft From Motor Vehicle	8	3	166.67
Actual Bodily Harm	7	10	-30.00
Burglary - Non Residential	7	13	-46.15
Criminal Damage	6	8	-25.00
rest	47	54	-12.96
Grand Total	278	260	6.92

Compared with Q1 0910, there has been a **2.46% decrease** in all crime, but small numerical increases in Other Theft and Theft of Pedal cycle.

	Q1 10-11	Q1 0910	%change
Other Theft	128	109	17.43
Theft of Pedal Cycle	26	23	13.04
Theft Person Dip	20	21	-4.76
Common Assault	11	11	0.00
Protection from Harassment	9	11	-18.18
Theft of Motor Vehicle	9	6	50.00
Theft From Motor Vehicle	8	11	-27.27
Actual Bodily Harm	7	8	-12.50
Burglary - Non Res	7	6	16.67
Criminal Damage (£5,000 or more)	6	5	20.00
rest	47	91	-48.35
Grand Total	278	285	-2.46

# Findings: Other Theft through year



- Increasing compared with same period last year, which was exceptionally low..
- Other Theft took 46.04% of all incidents (last quarter 39.46%) and was numerically the largest category(n=128).

# Findings: Repeat Venues for Other Theft

- The repeat venues for Other Theft are mainly various places of refreshment.
- 6 non-refreshment venues this quarter.
- A Police Liaison Officer is to be appointed for Guy's.

Apr-Jun 1011

Jul- Sep 0910

Oct Dec 0910

Jan-Mar0910

Business name	Total	venues	Total
The Horniman at Hays	34	HORNIMANS AT HAYS PH	16
Guys Hospital	9	Guys Hospital	12
The Bunch of Grapes	7	McDonalds Restaurant	4
Pommeler's Rest	5	Bagel Factory	3
Greater London Authority	3	BUNCH OF GRAPES PH	3
Hilton London Tower Bridge H	3	HILTON HOTEL	3
The Manna Society	3	Topnotch Health Club Plc	3
All Bar One	2	Bagel Street	2
Debut Club	2	Borough Bar	2
London Bridge City	2	Cafe Rouge	2
London Bridge train station	2	Caffe Nero	2
McDonalds	2	Hays Galleria.	2
Platform Bar	2	London Bridge Hotel	2
Pret A Manger	2	Over the Moon	2
Shipwrights Arms	2	Pommeler's Rest	2
Starbucks Hays	2	Pret A Manger	2
Starbucks STH	2	SE1 CLUB	2
rest	31	remaining venues 1 each	27
<b>Grand Total</b>	<b>115</b>	<b>Grand Total</b>	<b>91</b>

venue	Total
Hornimans Public House	27
Guys Hospital	16
Starbucks	7
Pommeler's Rest	6
SE1 CLUB	6
All Bar One	5
Pret A Manger	4
Shunt Events Ltd	3
Britain at War	2
Cafe Rouge	2
Kings College London	2
The London Dungeon	2
rest	25
<b>Grand Total</b>	<b>107</b>

bus ven	Total
Guys Hospital	21
The Horniman at Hays	11
Pommeler's Rest	6
SE One Club	6
Cooperage Wine Bar	3
Ernst & Young Llp	3
Over the Moon	3
The Bunch of Grapes	3
Barclays Bank Plc	2
Cote restaurant aned brasserie	2
EA WORLDWIDE/LONDON MAR	2
Guys Bar	2
London Bridge Hospital	2
Starbucks	2
rest	24
<b>Grand total</b>	<b>92</b>